

Logitek Jetstream comes pre-equipped with RJ-45 connectors pinned-out to the StudioHub+ audio standard. To benefit fully from StudioHub+ plug-n-play connectivity, select from these pre-made cables, adapters and Hubs.

StudioHub+ Solutions for Logitek Jetstream

This page features the StudioHub+ items custom made for Logitek as well as the most popular StudioHub+ solutions for all your studio wiring. For the complete line of StudioHub+ solutions with hundreds of other wiring products, see <http://www.studiohub.com>

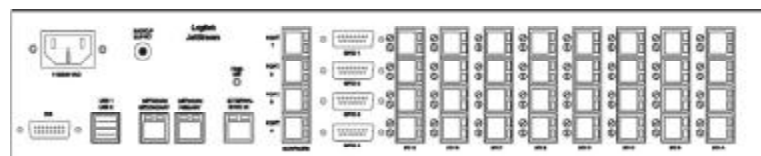
To wire Logitek with StudioHub+ →

Logitek Jetstream Mini

The JetStream Mini unit provides eight I/O card slots that accommodate five types of I/O cards: four mic preamps (with phantom power); four stereo analog line inputs; four stereo analog line outputs; four stereo AES or S/PDIF digital inputs and four stereo AES or S/PDIF digital outputs. All I/O connections use StudioHub+® compatible RJ-45 connectors. Also included are 12 GPI and 16 GPO contacts; four RS-485 ports with AES cue audio; 2 GbE ethernet ports and redundant power supplies in a single two rack unit enclosure. The unit's 24 stereo channels of mixing can be shared by one to four control surfaces. A DVI connector provides connection of a video monitor for operating Logitek's vScreen application (meters, router controls, and system information; user-configurable).



Logitek Jetstream Mini (Front)



Logitek Jetstream Mini (Back)



DB-15 connectors (male)

STEP-1 ← OR → STEP-2

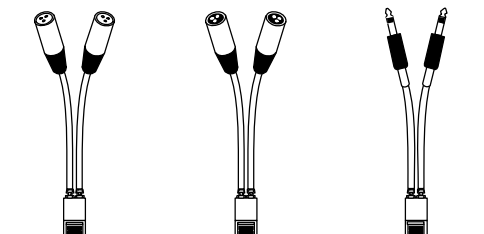
Select separate various length CAT-5 shielded patch cords and XLR and TRS adapters to wire directly to source gear



CAT-5 Patch Cable

Note - select appropriate length cable for each audio input or output and connect to gear or StudioHub+ plate directly, via a connector adapter (below) or via a Hub.

Cable Length	Part #
RJ-45 Patch Cable - 1'	Patch-1
RJ-45 Patch Cable - 2'	Patch-2
RJ-45 Patch Cable - 3'	Patch-3
RJ-45 Patch Cable - 5'	Patch-5
RJ-45 Patch Cable - 7'	Patch-7
RJ-45 Patch Cable - 10'	Patch-10
RJ-45 Patch Cable - 12'	Patch-12
RJ-45 Patch Cable - 15'	Patch-15
RJ-45 Patch Cable - 20'	Patch-20
RJ-45 Patch Cable - 25'	Patch-25
RJ-45 Patch Cable - 35'	Patch-35
RJ-45 Patch Cable - 50'	Patch-50
RJ-45 Patch Cable - 75'	Patch-75
RJ-45 Patch Cable - 100'	Patch-100
RJ-45 Patch Cable - 125'	Patch-125
RJ-45 Patch Cable - 150'	Patch-150



XLR Female Adapter ADAPT-XLRF
XLR Male Adapter ADAPT-XLRM
TRS Male Adapter ADAPT-TRS

Select a cable/adapter package for each unit, or larger packages of just cables or adapters



Audio Input Card Bundle (either Analog or Digital)
Consists of:
(4) PATCH-10 RJ-45 Patch Cable 10 foot
(4) ADAPT-XLRF adapters
INPUT-KITLO

Audio Output Card Bundle (either Analog or Digital)
Consists of:
(4) PATCH-10 RJ-45 Patch Cable 10 foot
(4) ADAPT-XLRM adapters
OUTPUT-KITLO

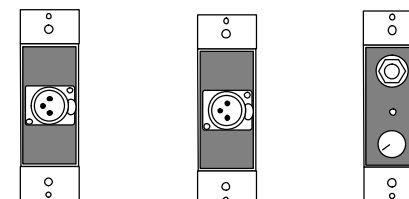
Audio Mic Input Card Bundle
Consists of:
(4) PATCH-10 RJ-45 Patch Cable 10 foot
(4) ADAPT-XLRM adapters
MIC-KITLO

Dual Mono Input Adapter - Used to feed 2 Analog Mono devices into a standard stereo RJ45 input.
Consists of:
(2) ADAPT-XLRF
(1) ADAPT-L/R
(2) PATCH-5 RJ-45 Patch Cables 5 foot
(1) PATCH-10 RJ-45 Patch Cable 10 foot
DUALIN-KITLO

Dual Mono Output Adapter - Used to feed 2 Analog Mono devices from a standard stereo RJ45 input.
Consists of:
(2) ADAPT-XLRM
(1) ADAPT-L/R
(2) PATCH-5 RJ-45 Patch Cables 5 foot
(1) PATCH-10 RJ-45 Patch Cable 10 foot
DUALOUT-KITLO

STEP-3

Select various connector plates and MatchJack in-line amplifiers to interface to source gear



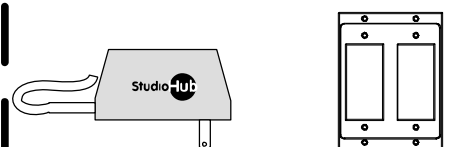
XLR Female Mic Jack (passive) p/n SH-1XLRF
XLR Female Mic Pre-Amp (powered) p/n SH-MIC
Head Phone Amp (powered) p/n SH-HP



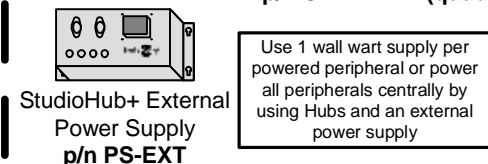
MatchJack Pre-Amp In (powered) p/n MJ-IN
MatchJack Pre-Amp Out (powered) p/n MJ-OUT



MatchJack S/PDIF to AES/EBU Converter (powered) p/n MJ-SPDIFIN
MatchJack AES/EBU to S/PDIF Converter (passive) p/n MJ-SPDIFOUT



Wall Wart External Power Supply p/n PS-WW
Plate Table "Well" Mounts p/n SH-WELL1 (single) p/n SH-WELL2 (dual) p/n SH-WELL3 (triple) p/n SH-WELL4 (quad)

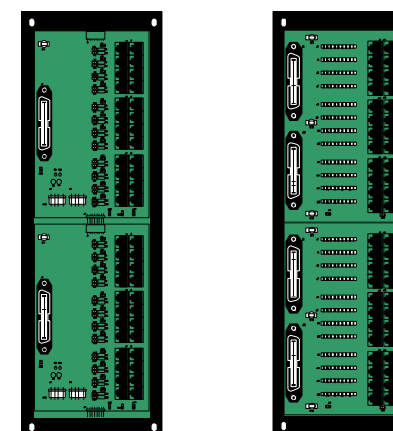


StudioHub+ External Power Supply p/n PS-EXT

Use 1 wall wart supply per powered peripheral or power all peripherals centrally by using Hubs and an external power supply

STEP-4 (optional)

Add Tie-Hubs and 25-pair CAT-5 cables to extend analog and digital audio signals to other studios or master control



24 Channel Tie-Line Hub 4-wire w/DC Link p/n TIE24-4 DC
24 Channel Tie-Line Hub 8-wire w/110 Blocks p/n TIE24-8



6 Channel Mini Tie-Line Hub / 8-wire p/n MINITIE6-8
12 Channel Mini Tie-Line Hub / 4-wire p/n MINITIE12-4

Note - all Tie-Hubs are available with 4-wire (2 pair) or 8-wire (4 pair) connectivity and in full (24 channel) or half (12 channel) sizing

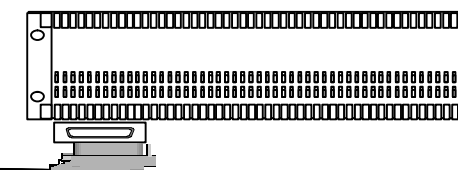


CAT-5 25 Pair Tie-Line

Cable Length	Part #
RJ-21 Cable - 10'	RJ21TIE-10
RJ-21 Cable - 15'	RJ21TIE-15
RJ-21 Cable - 25'	RJ21TIE-25
RJ-21 Cable - 50'	RJ21TIE-50
RJ-21 Cable - 100'	RJ21TIE-100
RJ-21 Cable - 150'	RJ21TIE-150
RJ-21 Cable - 200'	RJ21TIE-200
RJ-21 Cable - 250'	RJ21TIE-250

SH+ 4 DB-15M to RJ-21M GPI Break-Out Cable p/n RJ21LOGGPI-010
Cable construction: 10' - RJ-21 male to 4 DB-15 male connectors

Note - All red part numbers indicate customer specified cable lengths. Substitute from 010' to 250' in place of stock length shown to order a custom length.



SH+ 66B Punch Block

w/ integrated RJ-21 (female) connector p/n 11616

A
U
D
I
O

G
P
I