

NOTE

All red part numbers indicate customer specified cable lengths.
Substitute from 010' to 250' in place of stock length shown to
order a custom length.

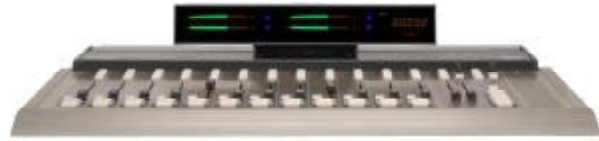
StudioHub+ Cabling Solutions for Flexiva Oasis / RMX DIGITAL / NetWave

This page features the Studio-Hub+ cables custom made for
VistaMax / Flexiva console systems.
For the complete line of StudioHub+ solutions with hundreds of other
wiring products - see <http://www.studiohub.com>

C
O
N
S
O
L
E

C
A
B
L
E
S

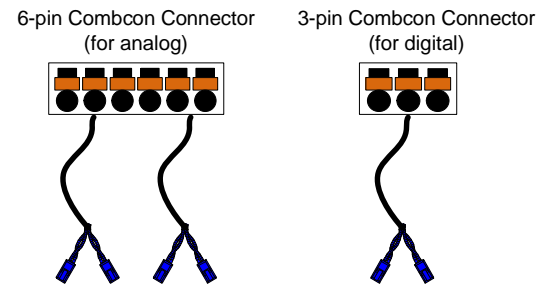
Oasis Console



Oasis Rear Audio and Logic I/O Connections

- 22 Analog (6-pin) and 6 Digital (3-pin) Combccon connectors (8 channel model)
 - 30 Analog (6-pin) and 6 Digital (3-pin) Combccon connectors (12 channel model)
- (multi-pin Combccon logic connectors not supported by StudioHub+)

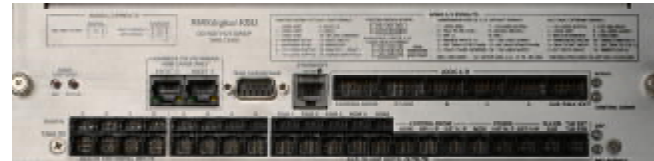
Specify the number or Analog or Digital cables of the length required to pre-wire panel I/O to a HUB below



SH+ Analog Cable p/n COMB6AN-07
7' COMBOCON (6 pin) cable to 2 mini-AMP
for 1 analog stereo input or output

SH+ Analog Cable p/n COMB3DI-07
7' COMBOCON (3 pin) cable to 2 mini-AMP
for 1 digital stereo input or output

RMX Console

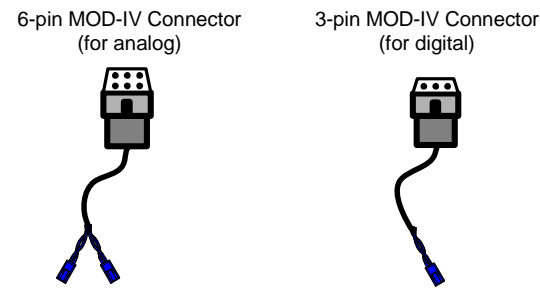


RMX Rear KSU I/O Section (one per console)
21 Analog (6-pin) and 13 Digital (3-pin) MOD-IV connectors
(multi-pin MOD-IV logic connectors not supported by StudioHub+)



RMX Rear 8 input I/O Expander (1 for 12 ch. / 2 for 18 ch. / 3 for 24 ch.)
Any combination of 8 Analog (6-pin) or 8 Digital (3-pin) MOD-IV connectors
(multi-pin MOD-IV logic connectors not supported by StudioHub+)

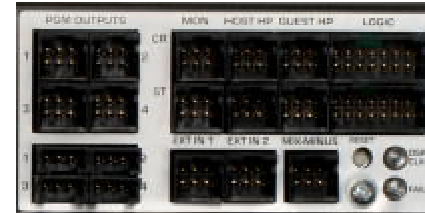
Specify the number or Analog or Digital cables of the length required to pre-wire panel I/O to a HUB below



SH+ Analog Cable p/n MOD6AN-07
7' MOD-IV (6 pin) cable to 2 mini-AMP
for 1 analog stereo input or output

SH+ Analog Cable p/n MOD3DI-07
7' MOD-IV (3 pin) cable to 2 mini-AMP
for 1 digital stereo input or output

NetWave Console



NetWave Rear KSU Output Section (one per console)
11 Analog (6-pin) and 4 Digital (3-pin) MOD-IV connectors
(multi-pin MOD-IV logic connectors not supported by StudioHub+)



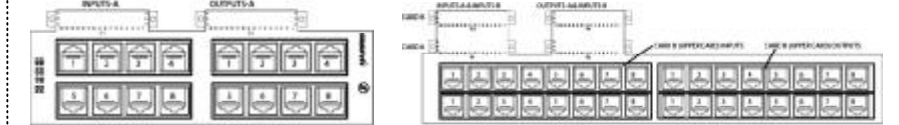
NetWave Rear 8 input I/O Expander (1 for 12 ch. / 2 for 18 ch. / 3 for 24 ch.)
8 Analog (6-pin) and/or 8 Digital (3-pin) MOD-IV connectors
(multi-pin MOD-IV logic connectors not supported by StudioHub+)

VMXpress & VMQuadra Digital I/O Cards



VMXpress rear panel shown with two I/O cards installed.
Each slot can accommodate a #95-1334 VM Analog card with 16 mono inputs and outputs
or a #95-1331-2 VM Digital card with 8 stereo inputs and outputs.
There is an additional MOD-IV 12-pin connector with 4 digital outputs on the rear.
(A #95-1332 VM Logic card is also installable, but is not supported by StudioHub+)

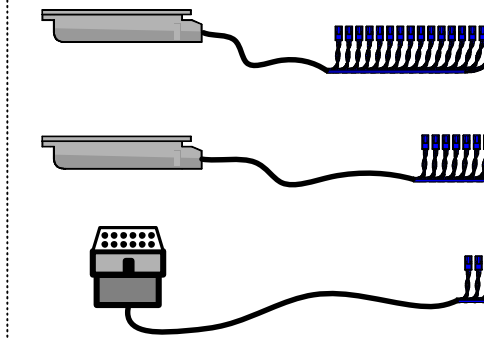
StudioHub+ Adapters may be directly installed on the VM rear for local RJ-45 connectivity



StudioHub+ PRE99-1341 Single Row
VM Card Adapter

StudioHub+ PRE99-1342 Dual Row
VM Card Adapter

(Purchase these StudioHub+ VMXpress adapters from Gates Air direct)



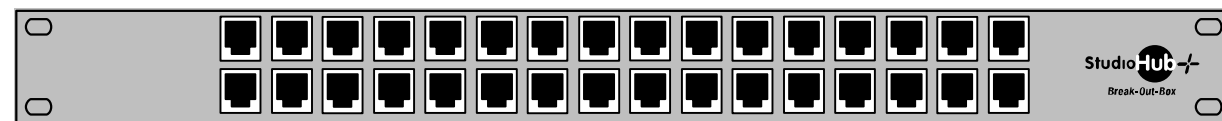
SH+ Analog Cable p/n EURO48AN-07
7' Euro (48 pin) cable to 16 mini-AMP
for 16 analog mono inputs or outputs

SH+ Digital Cable p/n EURO48DI-07
7' Euro (48 pin) cable to 8 mini-AMP
for 8 digital stereo inputs or outputs

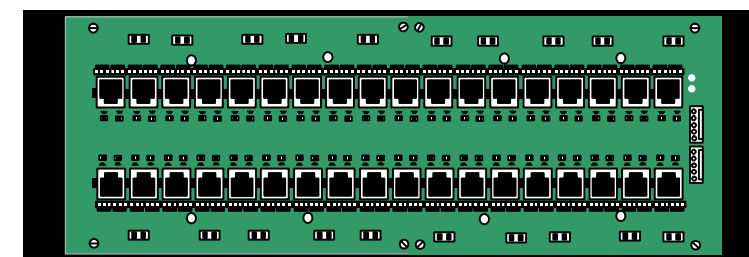
SH+ Digital Cable p/n MOD12DI-07
7' MOD-IV (12 pin) cable to 4 mini-AMP
for 4 digital stereo inputs or outputs

H
U
B
S

Select a rack or wall-mount HUB to terminate the Mini-Amp connector cables above



Part #HUB32 - 32 Channels of Stereo Analog or Digital I/O
Rack Mounts in 1 RU



Part #HUB36DC - 36 Channels of Stereo Analog or Digital I/O
with the option to add "DC-Connect" +/- 15VDC voltage to power active StudioHub+ peripherals (i.e. headphone amps)
Rack Mounts in 3 RU or screw to any flat surface