

NOTE
 All red part numbers indicate customer specified cable lengths.
 Substitute from 010' to 250' in place of stock length shown to
 order a custom length.

StudioHub+ Solutions for Sierra Automated Systems Rubicon Platform

This page features the Studio-Hub+ items custom made for SAS as well
 as the most popular StudioHub+ solutions for all your studio wiring.
 For the complete line of StudioHub+ solutions with hundreds of other
 wiring products, see <http://www.studiohub.com>

R
A
C
K

R
O
O
M

32KD Router



GPI-1600 Controller



(RJ-21 connections made to controller DB25 and DB37
 connectors via SAS provided RJ-21 adapter board)

RJ-21 50 pin
 connector EURO 96 pin
 connector

SAS 32KD KDI
 16 digital channel
 input card
 or
 SAS 32KD KDO
 16 digital channel
 output card

SAS 32KD KAI
 16 stereo analog channel
 input card
 or
 SAS 32KD KAO
 16 stereo analog channel
 output card

Part #HUB32 - 32 Channels or Stereo Analog or Digital I/O
 Rack Mounts in 1 RU (typically on rack rear rails)



SH+ Analog Cable p/n
 EUROAN32-010
 10' Euro cable for 32 analog inputs or
 outputs to 32 2-pin Amp connectors*

SH+ Digital Cable p/n RJ21AD16-010
 10' RJ-21 cable for 16 digital inputs or
 outputs to 16 2-pin Amp connectors*

RJ-21 male
 relays 1-16

 RJ-21 male
 optos 1-16

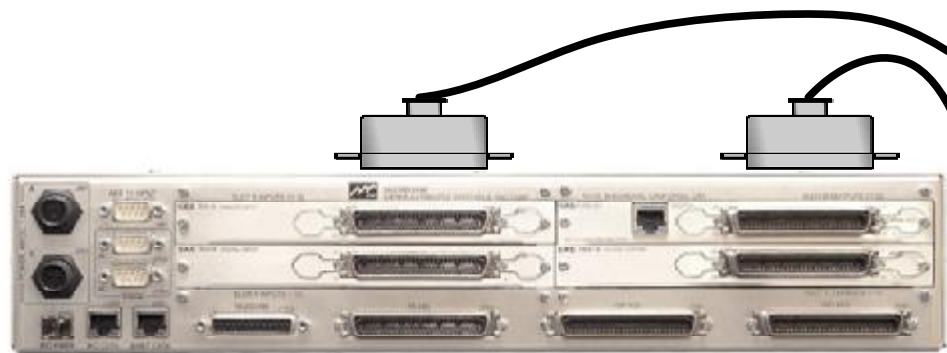
SH+ 66B Punch Blocks

w/ integrated RJ-21 (female) connector p/n 11616
 also available - w/ 2 integrated RJ-21 (female) connectors p/n 15811

SH+ RJ-21 to RJ-21 GPI Break-Out Cable
 p/n RJ21MBALE-010

Cable construction: 10' - RJ-21 male (90°) to RJ-21 male (180°
 with bale clips) (order 3 for RIO GPI & RS-485 break-out*)

RIO Studio Audio I/O / RS-485 / GPI Unit



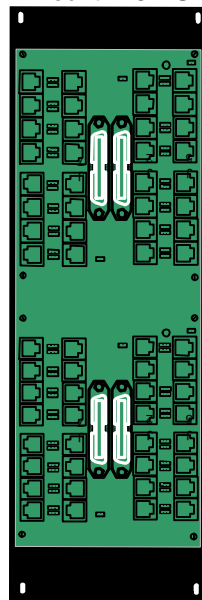
SH+ RJ-21 to RJ-21 GPI Break-Out Cable
 p/n RJ21MBALE-010

Cable construction: 10' - RJ-21 male (90°) to RJ-21
 male (180° with bale clips) (order 3 for RIO GPI & RS-
 485 break-out*)

SH+ 66B Punch Blocks

w/ integrated RJ-21 (female) connector p/n 11616
 also available - w/ 2 integrated RJ-21 (female) connectors p/n 15811

Part #HUBRIO
 Wall Mount or Rack
 Mount in 3 RU

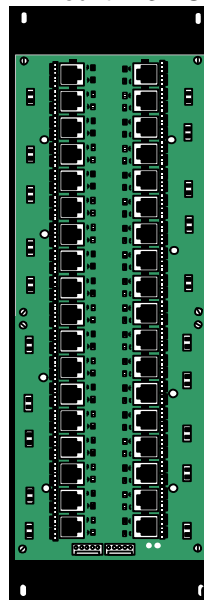


USE either a HUBRIO-DC
 or a HUB36-DC to break-
 out RIO audio
 connections

HUBRIO-DC's connect
 instantly with 4 RJ-21
 patch cables for up to 32
 channels of analog or
 digital input or output

HUB32-DC's plug-up with
 4 RJ-21 to 8 connector
 Amp 3-pin cables cables
 for up to 32 channels of
 analog or digital input or
 output and allow DC-Link
 power to be added to the
 connection

Part #HUB36-DC
 Wall Mount or Rack
 Mount in 3 RU



SH+ Digital Cable p/n RJ21RIO-010

10' RJ-21 male (180°) cable for 8 digital or analog
 inputs or outputs to a RJ-21 male (90°) connectors
 (one cable required per RIO plug-in I/O card*)

SH+ Digital Cable p/n RJ21RIOMTE-010

10' RJ-21 cable male (180°) for 8 digital or analog
 inputs or outputs to 8 2-pin Amp connectors (one
 cable required per RIO plug-in I/O card*)

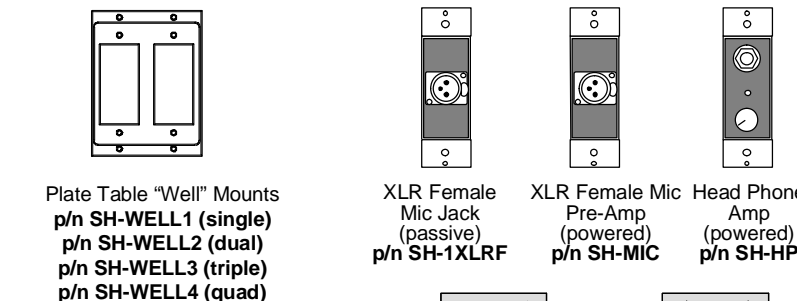


Plate Table "Well" Mounts
 p/n SH-WELL1 (single)
 p/n SH-WELL2 (dual)
 p/n SH-WELL3 (triple)
 p/n SH-WELL4 (quad)

Wall Wart External
 Power Supply
 p/n PS-WW

Use 1 wall wart supply per
 powered peripheral or power all
 peripherals centrally by using
 the Hubs36 and an external
 power supply

StudioHub+ External
 Power Supply
 p/n PS-EXT

Select various length
 CAT-5 shielded patch
 cords and XLR and TRS
 adapters to wire directly
 to source gear

S
T
U
D
I
O